

SCP51460

LDO Regulator - High Accuracy, Low Noise

20 mA

The SCP51460 is a low cost, low power, high accuracy LDO voltage regulator. This device will supply output current up to 20 mA at fixed output voltage 3.3 V with excellent regulation characteristics, making it ideal for precision regulator applications. It is designed to be stable without output capacitor. This is an important feature, when fast rise times and PCB space are in concern. The protective features include Short Circuit Current and Reverse Voltage Protection. The SCP51460 is packaged in 3 leads surface mount SOT-23 package.

Features

- Fixed Output Voltage 3.3 V
- V_{OUT} Accuracy 1% over 0 to +100°C
- Wide Input Voltage Range up to 28 V
- Low Quiescent Current
- Low Noise
- Reverse Battery Protection
- Stable Without Output Capacitor
- Available in 3 leads SOT-23 Package
- This Device is Pb-Free and is RoHS Compliant

Typical Applications

- Handheld Instruments
- Precision Regulators
- Data Acquisition Systems
- High Accuracy Micropower Supplies

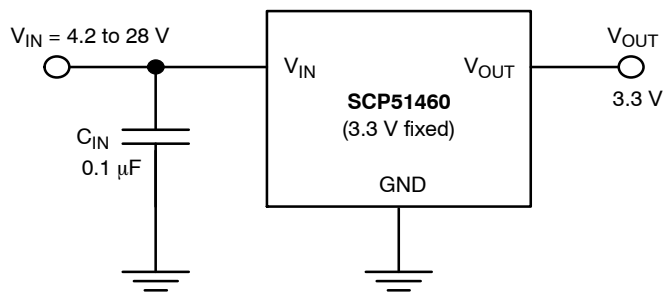
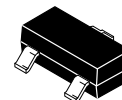


Figure 1. Typical Application Schematics



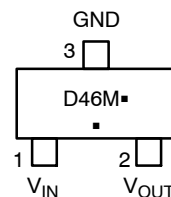
ON Semiconductor®

www.onsemi.com



SOT-23-3
SN1 SUFFIX
CASE 318

MARKING DIAGRAM AND PIN ASSIGNMENT



(Top View)

D46 = Specific Device Code
M = Date Code
■ = Pb-Free Package
(Note: Microdot may be in either location)

ORDERING INFORMATION

See detailed ordering and shipping information in the package dimensions section on page 5 of this data sheet.

SCP51460

Table 1. PIN FUNCTION DESCRIPTION

Pin No.	Pin Name	Description
1	V _{IN}	Positive Input Voltage
2	V _{OUT}	Regulated Output Voltage
3	GND	Power Supply Ground; Device Substrate

Table 2. ABSOLUTE MAXIMUM RATINGS

Rating	Symbol	Value	Unit
Input Voltage (Note 1)	V _{IN}	30	V
Reverse Input Voltage	V _{IN}	-15	V
Output Short Circuit Duration (Note 2)	I _{OUT}	∞	sec
Maximum Junction Temperature	T _{J(max)}	150	°C
Storage Temperature	T _{STG}	-65 to 150	°C
ESD Capability, Human Body Model (Note 3)	ESD _{HBM}	1000	V
ESD Capability, Machine Model (Note 3)	ESD _{MM}	100	V

Stresses exceeding those listed in the Maximum Ratings table may damage the device. If any of these limits are exceeded, device functionality should not be assumed, damage may occur and reliability may be affected.

1. Refer to ELECTRICAL CHARACTERISTICS and APPLICATION INFORMATION for Safe Operating Area.
2. With the Input Voltage ≤ 28 V the SCP51460 is able to withstand an infinitely long time under Short Circuit Condition.
3. This device series incorporates ESD protection and is tested by the following methods:
 ESD Human Body Model tested per AEC-Q100-002 (EIA/JESD22-A114)
 ESD Machine Model tested per AEC-Q100-003 (EIA/JESD22-A115)
 Latch up Current Maximum Rating: tested per JEDEC standard: JESD78.

Table 3. THERMAL CHARACTERISTICS

Rating	Symbol	Value	Unit
Thermal Characteristics, SOT23-3 package Thermal Resistance, Junction-to-Ambient (Note 4)	R _{θJA}	246	°C/W

4. Soldered on 1 oz 50 mm² FR4 copper area.

Table 4. OPERATING RANGES

Rating	Symbol	Min	Max	Unit
Operating Input Voltage (Note 5)	V _{IN}	V _{OUT} + 0.9	28	V
Operating Ambient Temperature Range	T _A	0	100	°C

5. Refer to ELECTRICAL CHARACTERISTICS and APPLICATION INFORMATION for Safe Operating Area.

SCP51460

Table 5. ELECTRICAL CHARACTERISTICS ($V_{IN} = V_{OUT} + 2.5\text{ V}$, $I_{OUT} = 0$, $C_{IN} = 0.1\ \mu\text{F}$, $C_{OUT} = 0\ \mu\text{F}$; For typical values $T_A = 25^\circ\text{C}$, for min/max values $0^\circ\text{C} \leq T_A \leq 100^\circ\text{C}$ unless otherwise noted.) (Note 6).

Parameter	Test Conditions	Symbol	Min	Typ	Max	Unit
Output Voltage		V_{OUT}	3.267 (-1 %)	3.3	3.333 (+1 %)	V
Line Regulation	$V_{IN} = V_{OUT} + 0.9\text{ V}$ to 2.5 V $V_{IN} = V_{OUT} + 2.5\text{ V}$ to 20 V	Reg_{LINE}	- -	120 75	1000 130	ppm/V
Load Regulation	$I_{OUT} = 100\ \mu\text{A}$, $T_A = 25^\circ\text{C}$ $I_{OUT} = 10\ \text{mA}$, $T_A = 25^\circ\text{C}$ $I_{OUT} = 20\ \text{mA}$, $T_A = 25^\circ\text{C}$	Reg_{LOAD}	- - -	1200 210 180	3000 300 300	ppm/mA
Load Regulation	$I_{OUT} = 100\ \mu\text{A}$, $0^\circ\text{C} \leq T_A \leq 100^\circ\text{C}$ $I_{OUT} = 10\ \text{mA}$, $0^\circ\text{C} \leq T_A \leq 100^\circ\text{C}$	Reg_{LOAD}	- -	1500 260	4000 300	ppm/mA
Dropout Voltage	Measured at $V_{OUT} - 2\%$ $I_{OUT} = 0\ \text{mA}$ $I_{OUT} = 10\ \text{mA}$	V_{DO}	- -	0.65 0.94	0.9 1.4	V
Quiescent Current	$I_{OUT} = 0\ \text{mA}$, $T_A = 25^\circ\text{C}$ $I_{OUT} = 0\ \text{mA}$, $0^\circ\text{C} \leq T_A \leq 100^\circ\text{C}$	I_Q	- -	150	180 220	μA
Output Short Circuit Current	$V_{OUT} = 0\ \text{V}$, $T_A = 25^\circ\text{C}$	I_{SC}	-	40	-	mA
Reverse Leakage	$V_{IN} = -15\ \text{V}$, $T_A = 25^\circ\text{C}$	I_{LEAK}	-	0.1	10	μA
Output Noise Voltage (Note 7)	$f = 0.1\ \text{Hz}$ to 10 Hz $f = 10\ \text{Hz}$ to 1 kHz	V_N	-	13.2 13.2	-	μV_{PP} μV_{rms}

Product parametric performance is indicated in the Electrical Characteristics for the listed test conditions, unless otherwise noted. Product performance may not be indicated by the Electrical Characteristics if operated under different conditions.

- Performance guaranteed over the indicated operating temperature range by design and/or characterization tested at $T_J = T_A = 25^\circ\text{C}$. Low duty cycle pulse techniques are used during testing to maintain the junction temperature as close to ambient as possible.
- Peak-to-peak noise is measured with a single pole high pass filter at 0.1 Hz and 2-pole low pass filter at 10 Hz. The unit is enclosed into still-air environment to eliminate thermocouple effects. The test time is set to 10 sec.

TYPICAL CHARACTERISTICS

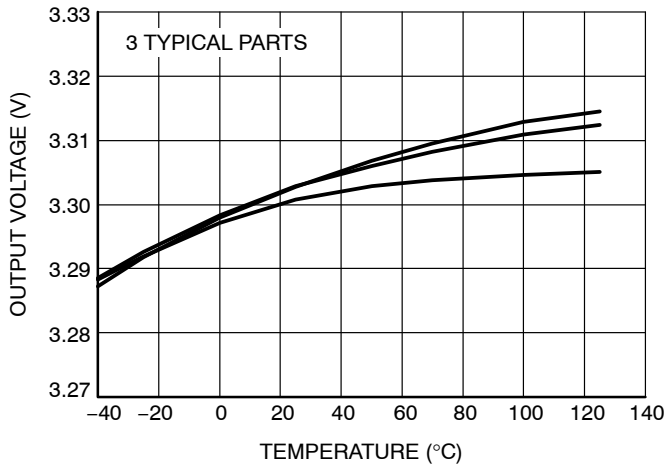


Figure 2. Output Voltage vs. Temperature

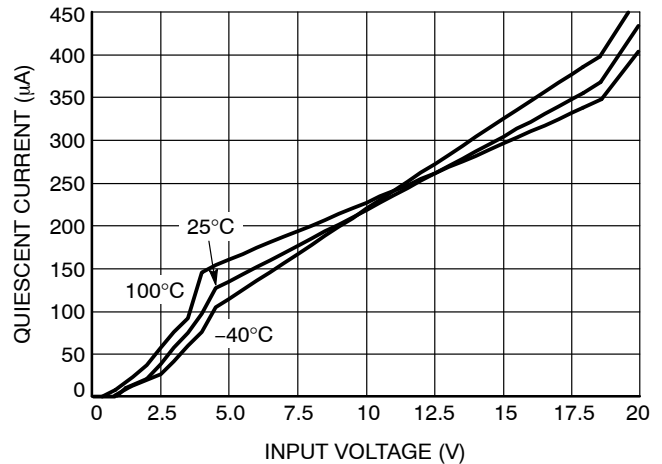


Figure 3. Quiescent Current vs. Input Voltage

TYPICAL CHARACTERISTICS

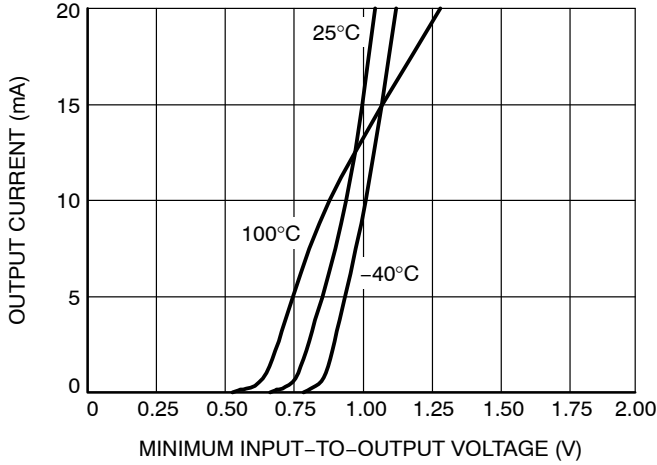


Figure 4. Dropout Voltage vs. Output Current

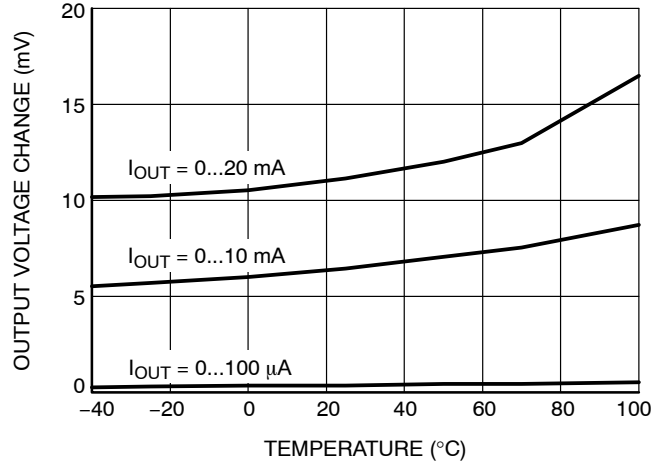


Figure 5. Output Voltage Change vs. Temperature

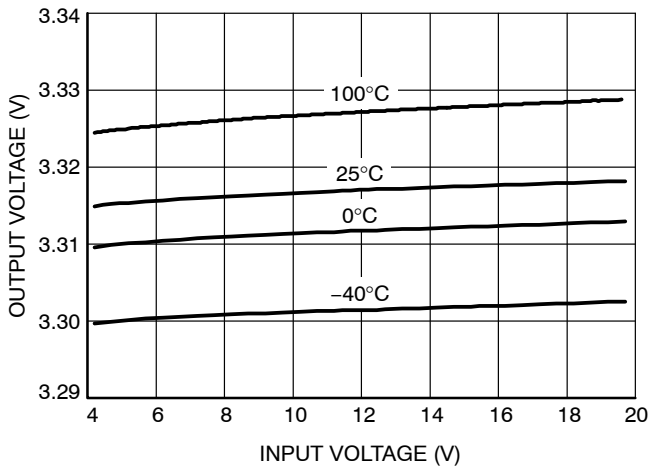


Figure 6. Output Voltage vs. Input Voltage

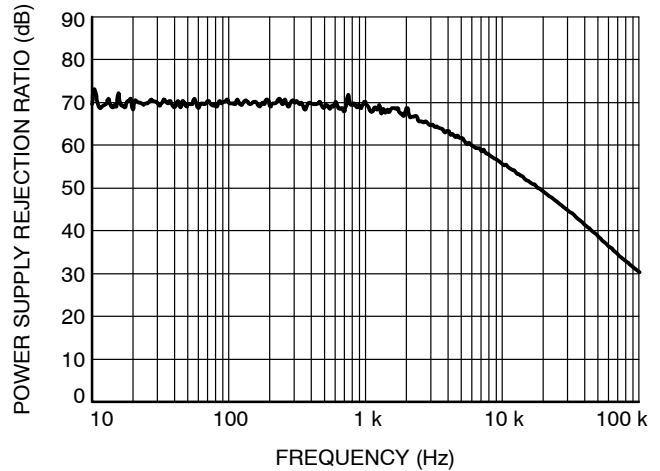


Figure 7. PSRR vs. Frequency

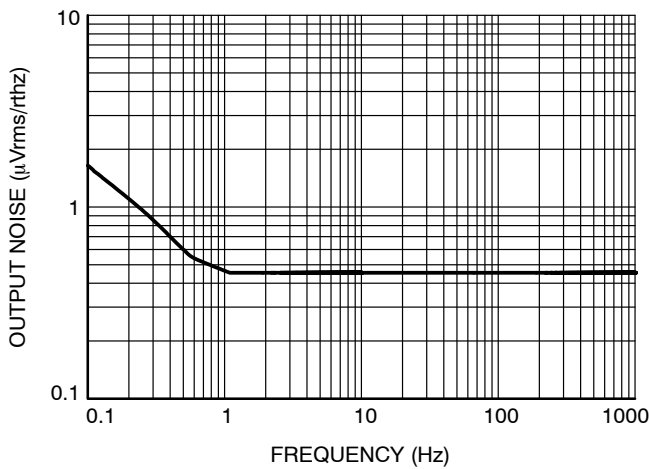


Figure 8. Output Voltage Noise 0.1 Hz - 1 kHz

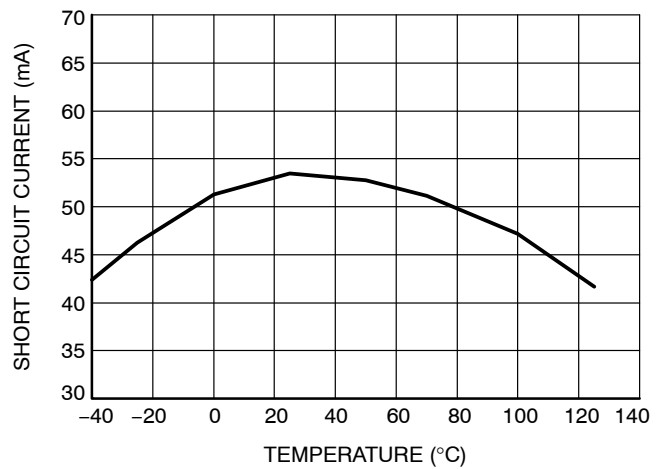


Figure 9. Short Circuit Current vs. Temperature

SCP51460

APPLICATIONS INFORMATION

Input Decoupling Capacitor (C_{IN})

A ceramic or tantalum 0.1 μF capacitor is recommended and should be connected close to the SCP51460 package. Higher capacitance and lower ESR will improve the overall line transient response.

Output Decoupling Capacitor (C_{OUT})

The SCP51460 does not require any output capacitance to be stable. With no capacitor at the output the device will have faster V_{OUT} rise time and will occupy less PCB space. In some applications however the output capacitor could be added. This will improve the overall transient response. During the transients capacitors with low ESR (e.g. Ceramic capacitors) will cause more ringing than the Tantalum or Aluminum Capacitors.

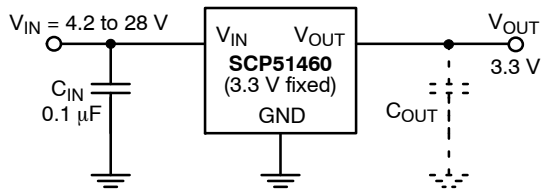


Table 6 shows the maximum capacitance of C_{OUT} for various load currents to avoid instability.

Table 6.

I _{OUT} = 100 μA	I _{OUT} = 1 mA	I _{OUT} = 10 mA	I _{OUT} = 20 mA
>10 μF	>10 μF	1 μF	0.68 μF

Thermal Characteristics

As power dissipation in the SCP51460 increases, it may become necessary to provide some thermal relief. The maximum power dissipation supported by the device is dependent upon board design and layout. The board material and the ambient temperature affect the rate of junction temperature rise for the part. The maximum power dissipation the SCP51460 can handle is given by:

$$P_{D(MAX)} = \frac{[T_{J(MAX)} - T_A]}{R_{\theta JA}} \quad (\text{eq. 1})$$

Since T_J is not recommended to exceed 100°C (T_{J(MAX)}), then the SCP51460 can dissipate up to 305 mW when the ambient temperature (T_A) is 25°C.

The power dissipated by the SCP51460 can be calculated from the following equations:

$$P_D \approx V_{in}(I_{GND@I_{out}}) + I_{out}(V_{in} - V_{out}) \quad (\text{eq. 2})$$

or

$$V_{in(MAX)} \approx \frac{P_{D(MAX)} + (V_{out} \cdot I_{out})}{I_{out} + I_{GND}} \quad (\text{eq. 3})$$

Hints

V_{in} and GND printed circuit board traces should be as wide as possible. When the impedance of these traces is high, there is a chance to pick up noise or cause the regulator to malfunction. Place external components, especially the output capacitor, as close as possible to the SCP51460, and make traces as short as possible.

ORDERING INFORMATION

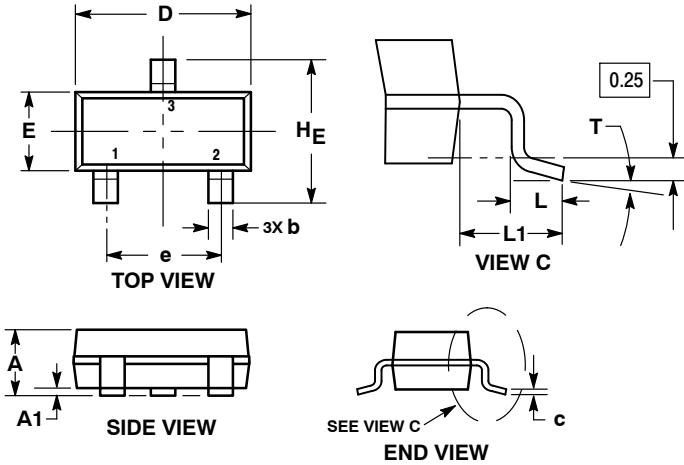
Device	Device Code	Package	Shipping [†]
SCP51460SN33T1G	D46	SOT23-3 (Pb-Free)	3,000 / Tape & Reel

[†]For information on tape and reel specifications, including part orientation and tape sizes, please refer to our Tape and Reel Packaging Specification Brochure, BRD8011/D.

SCP51460

PACKAGE DIMENSIONS

SOT-23 (TO-236)
CASE 318-08
ISSUE AR

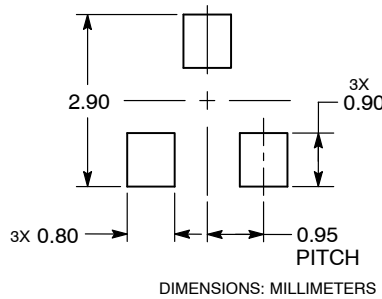


NOTES:

1. DIMENSIONING AND TOLERANCING PER ASME Y14.5M, 1994.
2. CONTROLLING DIMENSION: MILLIMETERS.
3. MAXIMUM LEAD THICKNESS INCLUDES LEAD FINISH. MINIMUM LEAD THICKNESS IS THE MINIMUM THICKNESS OF THE BASE MATERIAL.
4. DIMENSIONS D AND E DO NOT INCLUDE MOLD FLASH, PROTRUSIONS, OR GATE BURRS.

DIM	MILLIMETERS			INCHES		
	MIN	NOM	MAX	MIN	NOM	MAX
A	0.89	1.00	1.11	0.035	0.039	0.044
A1	0.01	0.06	0.10	0.000	0.002	0.004
b	0.37	0.44	0.50	0.015	0.017	0.020
c	0.08	0.14	0.20	0.003	0.006	0.008
D	2.80	2.90	3.04	0.110	0.114	0.120
E	1.20	1.30	1.40	0.047	0.051	0.055
e	1.78	1.90	2.04	0.070	0.075	0.080
L	0.30	0.43	0.55	0.012	0.017	0.022
L1	0.35	0.54	0.69	0.014	0.021	0.027
HE	2.10	2.40	2.64	0.083	0.094	0.104
T	0°	---	10°	0°	---	10°

RECOMMENDED SOLDERING FOOTPRINT*



*For additional information on our Pb-Free strategy and soldering details, please download the ON Semiconductor Soldering and Mounting Techniques Reference Manual, SOLDERRM/D.

ON Semiconductor and are trademarks of Semiconductor Components Industries, LLC dba ON Semiconductor or its subsidiaries in the United States and/or other countries. ON Semiconductor owns the rights to a number of patents, trademarks, copyrights, trade secrets, and other intellectual property. A listing of ON Semiconductor's product/patent coverage may be accessed at www.onsemi.com/site/pdf/Patent-Marking.pdf. ON Semiconductor reserves the right to make changes without further notice to any products herein. ON Semiconductor makes no warranty, representation or guarantee regarding the suitability of its products for any particular purpose, nor does ON Semiconductor assume any liability arising out of the application or use of any product or circuit, and specifically disclaims any and all liability, including without limitation special, consequential or incidental damages. Buyer is responsible for its products and applications using ON Semiconductor products, including compliance with all laws, regulations and safety requirements or standards, regardless of any support or applications information provided by ON Semiconductor. "Typical" parameters which may be provided in ON Semiconductor data sheets and/or specifications can and do vary in different applications and actual performance may vary over time. All operating parameters, including "Typicals" must be validated for each customer application by customer's technical experts. ON Semiconductor does not convey any license under its patent rights nor the rights of others. ON Semiconductor products are not designed, intended, or authorized for use as a critical component in life support systems or any FDA Class 3 medical devices or medical devices with a same or similar classification in a foreign jurisdiction or any devices intended for implantation in the human body. Should Buyer purchase or use ON Semiconductor products for any such unintended or unauthorized application, Buyer shall indemnify and hold ON Semiconductor and its officers, employees, subsidiaries, affiliates, and distributors harmless against all claims, costs, damages, and expenses, and reasonable attorney fees arising out of, directly or indirectly, any claim of personal injury or death associated with such unintended or unauthorized use, even if such claim alleges that ON Semiconductor was negligent regarding the design or manufacture of the part. ON Semiconductor is an Equal Opportunity/Affirmative Action Employer. This literature is subject to all applicable copyright laws and is not for resale in any manner.

PUBLICATION ORDERING INFORMATION

LITERATURE FULFILLMENT:
Literature Distribution Center for ON Semiconductor
19521 E. 32nd Pkwy, Aurora, Colorado 80011 USA
Phone: 303-675-2175 or 800-344-3860 Toll Free USA/Canada
Fax: 303-675-2176 or 800-344-3867 Toll Free USA/Canada
Email: orderlit@onsemi.com

N. American Technical Support: 800-282-9855 Toll Free
USA/Canada
Europe, Middle East and Africa Technical Support:
Phone: 421 33 790 2910
Japan Customer Focus Center
Phone: 81-3-5817-1050

ON Semiconductor Website: www.onsemi.com
Order Literature: <http://www.onsemi.com/orderlit>
For additional information, please contact your local Sales Representative